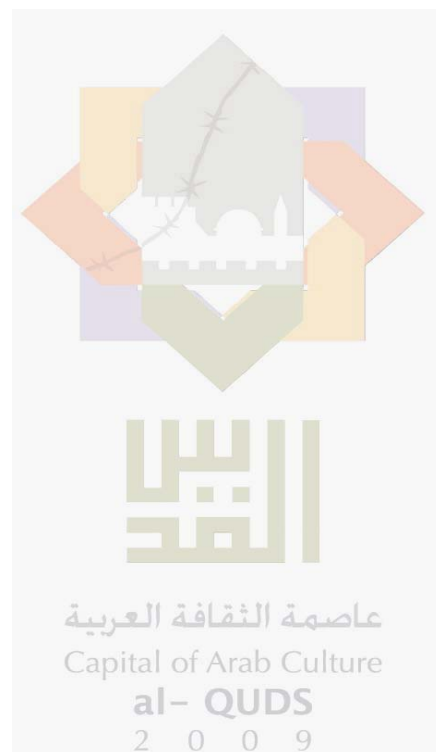
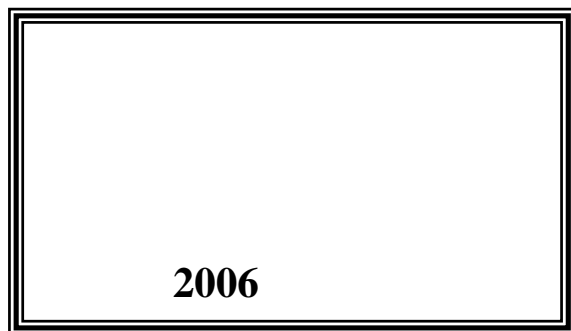


(2009)

(1) :
2009 /



© 1430 - 2009.

:

(2009)

.2009

. (1) - :

:

- 1647 . .

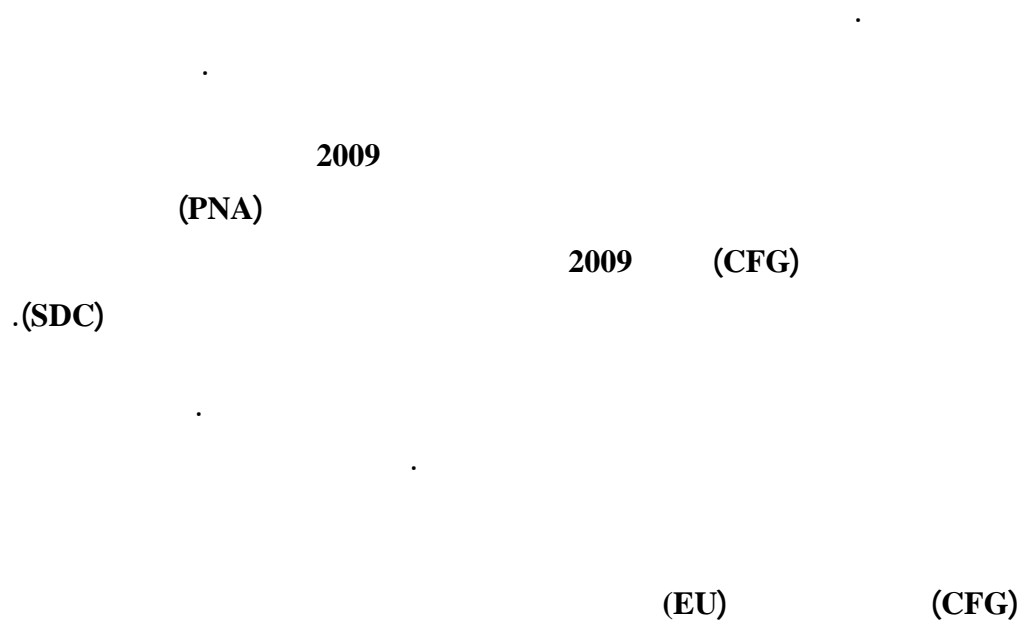
(970/972) 2 242 6340 :

(970/972) 2 242 6343 :

diwan@pcbs.gov.ps :

<http://www.pcbs.gov.ps> :





•

•

•

•

•

•

2009

1996

2008 2006 2005 1998
2005

2008 2004 2008 2002

.2009

2009

| | | |
|-----------|------|-----|
| 17 | | : |
| 19 | | : |
| 21 | | : |
| 21 | | 1.3 |
| 21 | 2009 | 2.3 |
| 22 | 2009 | 3.3 |
| 22 | 2009 | 4.3 |
| 23 | 2009 | 5.3 |
| 25 | | |

2009

.

:

2009

3,694

2009

75

•

7,612

.

951.8

2009

•

%20.1

%23.8

.2008

%29.8

201

1,144

1,345

•

%11.9

%4.7

2008

.2008

69,380

2009

•

%20.0

%41.0

2008

.2008

%50.2

•

%10.7 %36.8

.

168,167

•

%45.7 2008

%19.1

.

.2009

(/) 2.4

•

.1996

.2009

2000

2001

.()

:()

./

:

•

•

$$:(\quad)$$

()

•

$$:(\quad)$$

()

()

•

•

•

•

•

•

•

•

•

•

$$\vdots$$

•

•

•

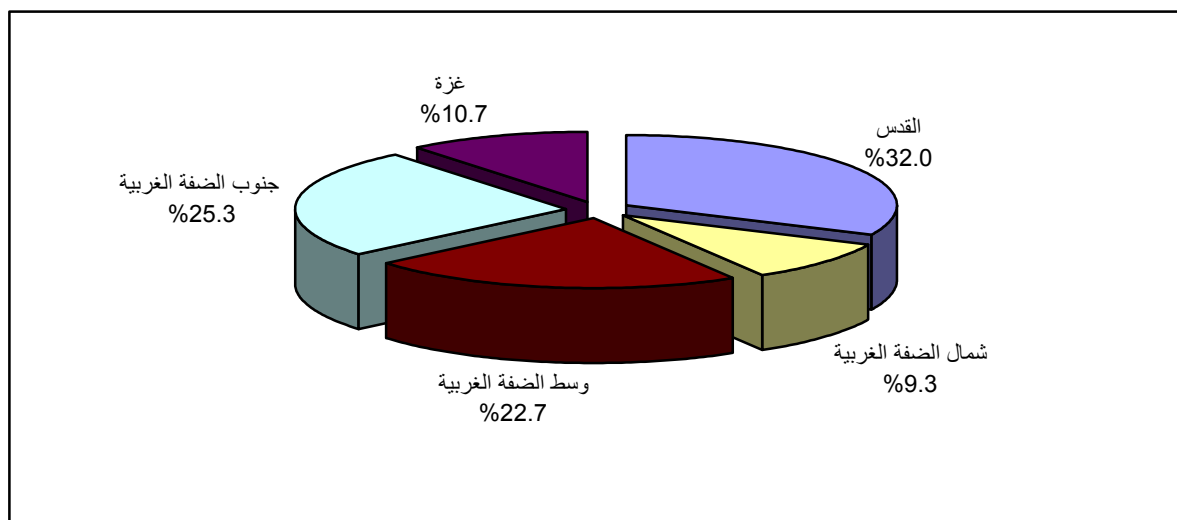
7,612 3,694 2009 117 75

| 2009 | | | | 1.3 |
|-------|-------|------|--|-----|
| 292 | 134 | 7 : | | • |
| 1,169 | 580 | 17 : | | • |
| 2,355 | 1,109 | 24 : | | • |
| 3,226 | 1,546 | 19 : | | • |
| 570 | 325 | 8 : | | • |

.2009

2009

:(1)



2009

2.3

%23.8

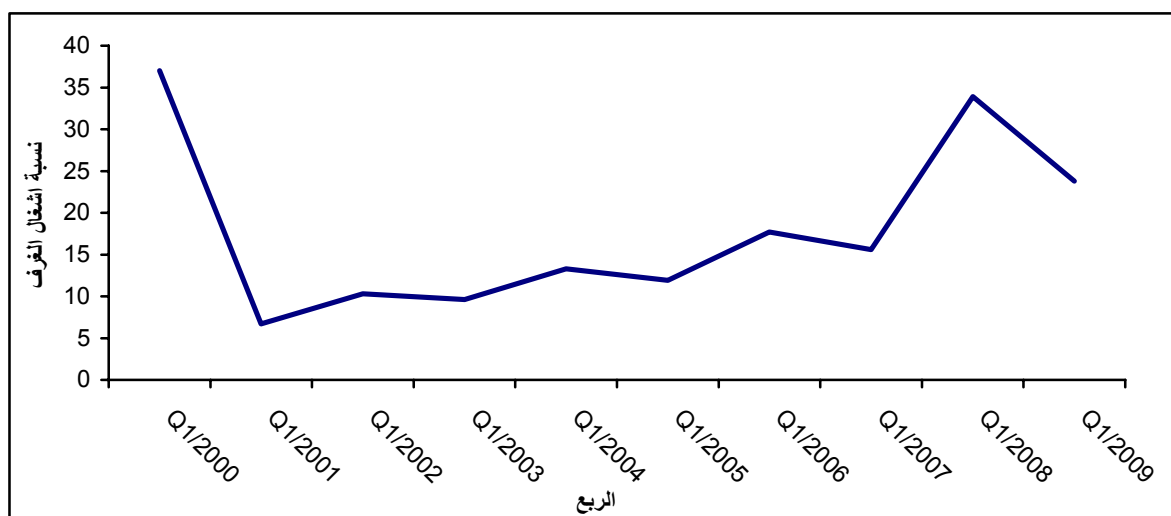
951.8

:

2001

(2009 - 2000)

:(2)



2009

3.3

201

1,144

1,345

145

953

1,098

56

191

247

2009

4.3

%8.7

69,380

2009

2008

%34.7

%.41.0

%20.0

%50.2

%1.9

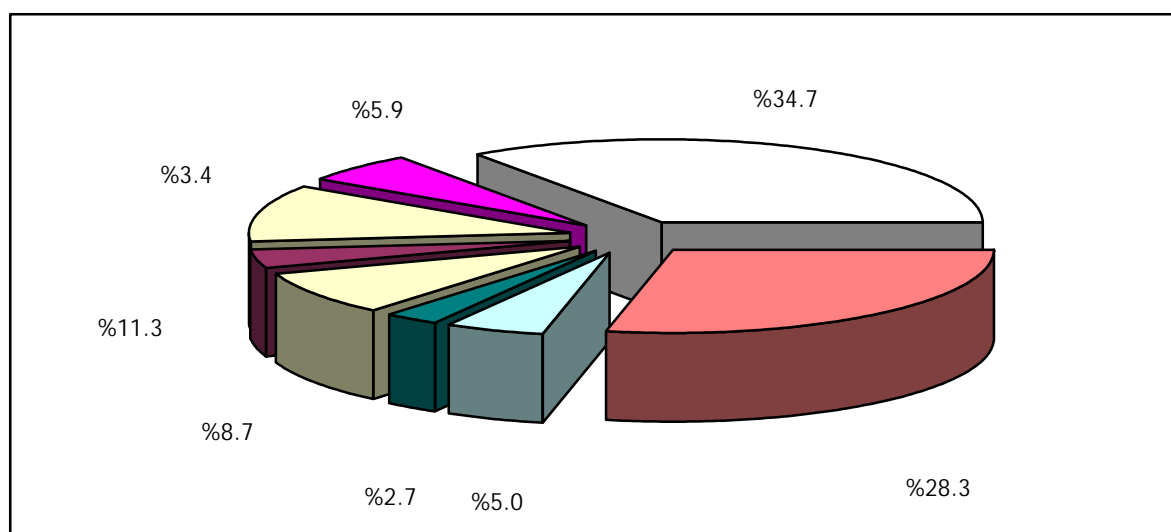
%10.7

%36.8

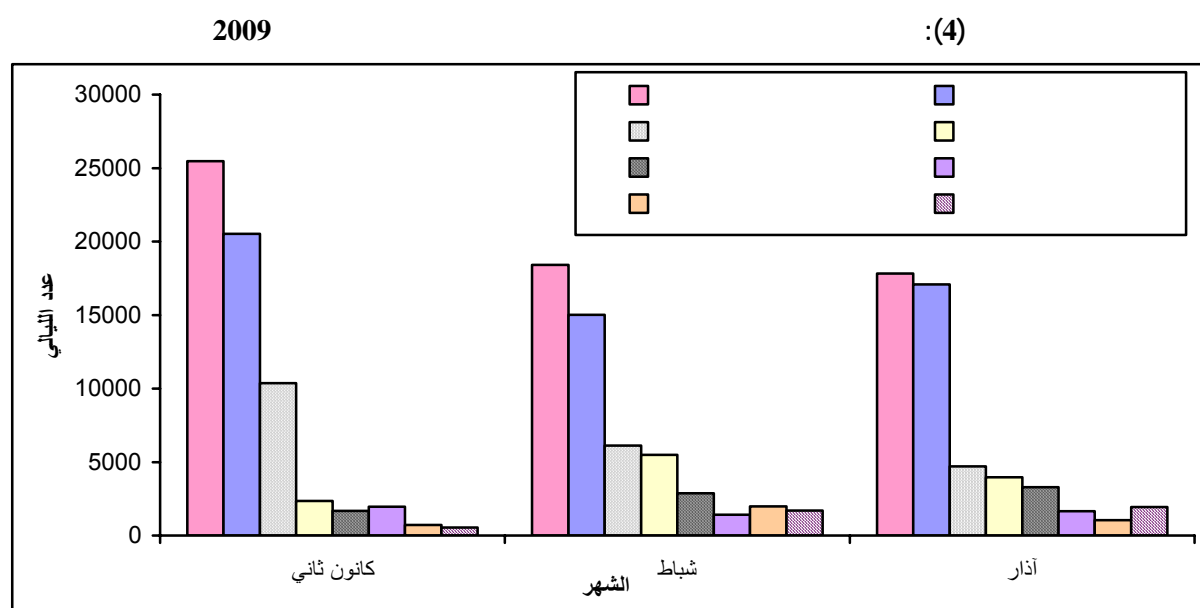
%0.4

2009

:(3)



2009 168,167 %36.7 %7.0
 %12.6
 %54.7 %19.1 2008
 .2008
 %9.1 %53.1 :
 %0.2 %1.6 %36.0



2009 5.3
 2.4
 2.5
 1.2 2.4 2.2 2.2

2009
 .2008

| 2008 | | 2009 | |
|-------|-------|---------|---|
| (%) | | | |
| 2008 | 2008 | | |
| -11.8 | -8.5 | 75 | |
| -4.7 | 11.9 | 1,345 | |
| -41.0 | -20.0 | 69,380 | |
| -45.7 | -19.1 | 168,167 | |
| -23.3 | -30.6 | 951.8 | |
| -44.5 | -18.2 | 1,827.9 | |
| -20.1 | -29.8 | 23.8 | % |
| -41.8 | -14.0 | 21.7 | % |

Tables

2009

:1

Table 1: Main Indicators for Hotel Activities by Month and Region During the First Quarter, 2009

| Region | Month | Bed Occupancy | | Room Occupancy | | No. of Nights | No. of Guests | No. of Beds | No. of Rooms | No. of Operating Hotels | |
|--------------------------------|-----------------|---------------|---------------|----------------|---------------|---------------|---------------|-------------|--------------|-------------------------|---|
| | | % | Average | % | Average | | | | | | |
| Palestinian Territory * | | 22.1 | 1868.5 | 23.8 | 951.8 | 168167 | 69380 | 8441 | 4004 | 75 | * |
| All Regions | January | 23.7 | 2053.1 | 25.5 | 1038.8 | 63646 | 23568 | 8659 | 4074 | 82 | |
| | February | 20.9 | 1892.5 | 23.8 | 1009.3 | 52989 | 25268 | 9053 | 4245 | 82 | |
| | March | 21.8 | 1662.3 | 22.0 | 812.9 | 51532 | 20544 | 7612 | 3694 | 75 | |
| North of West Bank | January | 8.0 | 23.5 | 13.0 | 17.6 | 727 | 273 | 292 | 136 | 7 | |
| | February | 11.7 | 34.0 | 15.6 | 21.3 | 953 | 483 | 292 | 136 | 7 | |
| | March | 11.3 | 32.9 | 17.6 | 23.5 | 1021 | 550 | 292 | 134 | 7 | |
| Middle of West Bank | January | 6.1 | 85.5 | 11.7 | 68.7 | 2652 | 1161 | 1396 | 586 | 17 | |
| | February | 12.5 | 260.9 | 20.8 | 183.5 | 7305 | 4185 | 2087 | 884 | 19 | |
| | March | 14.9 | 174.5 | 22.9 | 133.1 | 5410 | 2073 | 1169 | 580 | 17 | |
| Jerusalem | January | 45.6 | 1407.3 | 57.7 | 817.8 | 43626 | 14289 | 3084 | 1417 | 29 | |
| | February | 31.5 | 933.5 | 46.5 | 654.5 | 26137 | 12933 | 2962 | 1408 | 28 | |
| | March | 26.8 | 630.1 | 43.6 | 483.5 | 19533 | 7655 | 2355 | 1109 | 24 | |
| South of West Bank | January | 15.7 | 529.6 | 8.0 | 129.4 | 16419 | 7664 | 3379 | 1613 | 21 | |
| | February | 19.4 | 661.0 | 9.0 | 147.4 | 18508 | 7602 | 3414 | 1632 | 22 | |
| | March | 25.6 | 824.5 | 11.2 | 172.5 | 25560 | 10258 | 3226 | 1546 | 19 | |
| Gaza Strip | January | 1.4 | 7.2 | 1.6 | 5.3 | 222 | 181 | 508 | 322 | 8 | |
| | February | 1.0 | 3.1 | 1.5 | 2.8 | 86 | 65 | 298 | 185 | 6 | |
| | March | 0.1 | 0.3 | 0.1 | 0.3 | 8 | 8 | 570 | 325 | 8 | |

* Represents the quarter average except number of guests and number of guest nights which represent the total for the quarter.

*

2009

:2

Table 2: Number of Hotels and Rooms by Facilities and Region as of March, 2009

| Region | Facilities | | | | | | | | | | No. of Rooms | No. of Operating Hotels | |
|------------------------------|-------------|-----------|------------|-------------|------------------|-------------|--------------|-------------|------------|------------------|--------------|-------------------------|--|
| | Internet | DVD | Vedio | Telephone | Air Conditioning | Heating | Refrigerator | T.V | Radio | Private Bathroom | | | |
| Palestinian Territory | 1656 | 80 | 282 | 3426 | 3145 | 3205 | 2128 | 3323 | 943 | 3483 | 3694 | 75 | |
| North of West Bank | 79 | 0 | 0 | 93 | 119 | 119 | 94 | 113 | 12 | 115 | 134 | 7 | |
| Middle of West Bank | 349 | 0 | 0 | 483 | 530 | 516 | 396 | 537 | 99 | 523 | 580 | 17 | |
| Jerusalem | 221 | 79 | 281 | 1026 | 878 | 985 | 624 | 967 | 816 | 984 | 1109 | 24 | |
| South of West Bank | 812 | 1 | 1 | 1524 | 1368 | 1546 | 755 | 1425 | 0 | 1546 | 1546 | 19 | |
| Gaza Strip | 195 | 0 | 0 | 300 | 250 | 39 | 259 | 281 | 16 | 315 | 325 | 8 | |

2009

:3

Table 3: Number of Hotels by Availability of Public Services and Region as of March, 2009

| Region | Public Services | | | | | | | | | | | | No. of Operating Hotels | |
|------------------------------|-----------------|---------------|--------------|-----------|-----------|--------------|-----------|-----------|-----------|-----------|-----------|------------------|-------------------------|--|
| | Other | Room Services | Hair Dresser | Shops | Laundry | Photocopying | Cofeshop | Typing | Bar | Internet | Fax | Puplic Telephone | | |
| Palestinian Territory | 13 | 55 | 5 | 12 | 31 | 56 | 31 | 50 | 20 | 50 | 62 | 10 | 75 | |
| North of West bank | 1 | 7 | 0 | 1 | 4 | 5 | 3 | 4 | 0 | 4 | 5 | 1 | 7 | |
| Middle of West bank | 9 | 17 | 1 | 0 | 9 | 14 | 10 | 12 | 4 | 9 | 16 | 5 | 17 | |
| Jerusalem | 0 | 6 | 3 | 6 | 2 | 14 | 2 | 14 | 2 | 11 | 14 | 0 | 24 | |
| South of West bank | 2 | 17 | 1 | 4 | 13 | 19 | 11 | 17 | 13 | 18 | 19 | 4 | 19 | |
| Gaza Strip | 1 | 8 | 0 | 1 | 3 | 4 | 5 | 3 | 1 | 8 | 8 | 0 | 8 | |

2009

:4

Table 4: Average Number of Workers in Hotels by Type of Work, Sex and Region During the First Quarter, 2009

| Region | Total | | Operation | | Administration | | * No. of Operating Hotels * | |
|------------------------------|------------|-------------|------------|------------|----------------|------------|-----------------------------------|--|
| | Females | Males | Females | Males | Females | Males | | |
| Palestinian Territory | 201 | 1144 | 145 | 953 | 56 | 191 | 75 | |
| North of West Bank | 6 | 54 | 4 | 34 | 2 | 20 | 7 | |
| Middle of West Bank | 27 | 264 | 16 | 221 | 11 | 43 | 17 | |
| Jerusalem | 75 | 471 | 50 | 397 | 25 | 74 | 24 | |
| South of West Bank | 92 | 300 | 75 | 263 | 17 | 37 | 19 | |
| Gaza Strip | 1 | 55 | 0 | 38 | 1 | 17 | 8 | |

* As in March, 2009

2009

*

2009

:5

Table 5: Number and Percentage of Guests by Nationality and Region During the First Quarter, 2009

| Region | Month | Nationality | | | | | | | | | | No. of Operating Hotels | | |
|-----------------------|----------|----------------|--------|------|--------|--------|--------|----------------|--------|-----------|--------|-------------------------|--|--|
| | | U.S.A & Canada | | Asia | | Israel | | Arab Countries | | Palestine | | | | |
| | | % | Number | % | Number | % | Number | % | Number | % | Number | | | |
| Palestinian Territory | | 11.3 | 7852 | 5.0 | 3443 | 3.4 | 2376 | 0.9 | 616 | 8.7 | 6053 | 75 | | |
| All Regions | January | 14.2 | 3339 | 2.6 | 613 | 1.6 | 366 | 0.7 | 162 | 5.1 | 1203 | 82 | | |
| | February | 11.6 | 2934 | 5.0 | 1270 | 5.3 | 1337 | 1.1 | 286 | 11.3 | 2867 | 82 | | |
| | March | 7.7 | 1579 | 7.6 | 1560 | 3.3 | 673 | 0.8 | 168 | 9.7 | 1983 | 75 | | |
| North of West Bank | January | 3.7 | 10 | 0.4 | 1 | 1.1 | 3 | 2.6 | 7 | 82.4 | 225 | 7 | | |
| | February | 1.9 | 9 | 0.6 | 3 | 4.6 | 22 | 0.4 | 2 | 72.0 | 348 | 7 | | |
| | March | 3.3 | 18 | 3.1 | 17 | 12.9 | 71 | 2.0 | 11 | 60.9 | 335 | 7 | | |
| Middle of West Bank | January | 6.4 | 74 | 2.5 | 29 | 4.3 | 50 | 7.8 | 90 | 64.9 | 753 | 17 | | |
| | February | 8.6 | 360 | 1.2 | 52 | 7.6 | 320 | 6.3 | 262 | 53.2 | 2225 | 19 | | |
| | March | 8.0 | 166 | 1.2 | 24 | 6.1 | 126 | 4.7 | 97 | 61.6 | 1278 | 17 | | |
| Jerusalem | January | 20.5 | 2927 | 2.1 | 294 | 2.0 | 283 | 0.1 | 15 | 0.0 | 0 | 29 | | |
| | February | 17.2 | 2221 | 5.2 | 671 | 7.3 | 947 | 0.2 | 22 | 0.0 | 5 | 28 | | |
| | March | 15.3 | 1168 | 4.9 | 374 | 3.7 | 283 | 0.0 | 0 | 0.0 | 0 | 24 | | |
| South of West Bank | January | 4.2 | 321 | 3.5 | 272 | 0.4 | 30 | 0.0 | 2 | 2.9 | 223 | 21 | | |
| | February | 4.4 | 335 | 7.2 | 544 | 0.6 | 48 | 0.0 | 0 | 3.8 | 289 | 22 | | |
| | March | 2.2 | 227 | 11.2 | 1145 | 1.9 | 193 | 0.6 | 60 | 3.6 | 370 | 19 | | |
| Gaza Strip | January | 3.9 | 7 | 9.4 | 17 | 0.0 | 0 | 26.5 | 48 | 1.1 | 2 | 8 | | |
| | February | 13.8 | 9 | 0.0 | 0 | 0.0 | 0 | 0.0 | 0 | 0.0 | 0 | 6 | | |
| | March | 0.0 | 0 | 0.0 | 0 | 0.0 | 0 | 0.0 | 0 | 0.0 | 0 | 8 | | |

2009

:() 5

Table 5 (Cont.): Number and Percentage of Guests by Nationality and Region During the First Quarter, 2009

| Region | Month | Total | | Nationality | | | | | | | | | | | |
|--------------------------------------|----------|-------|-----------------|-----------------------|-----------------|--------|-----------------|--------------------------|-----------------|----------------|-----------------|-------------------------|-----------------|--|--|
| | | | | Australia & Newzeland | | Africa | | Other European Countries | | European Union | | Central & South America | | | |
| | | % | العدد Number | % | العدد Number | % | العدد Number | % | العدد Number | % | العدد Number | % | العدد Number | | |
| Palestinian Territory All Regions | | 100 | 69380 | 0.5 | 359 | 5.9 | 4088 | 28.3 | 19567 | 34.7 | 24093 | 1.3 | 933 | | |
| | January | 100 | 23568 | 0.1 | 19 | 6.3 | 1508 | 31.0 | 7304 | 38.0 | 8965 | 0.4 | 89 | | |
| | February | 100 | 25268 | 1.0 | 244 | 5.4 | 1351 | 25.7 | 6500 | 32.0 | 8080 | 1.6 | 399 | | |
| | March | 100 | 20544 | 0.5 | 96 | 6.0 | 1229 | 28.0 | 5763 | 34.2 | 7048 | 2.2 | 445 | | |
| North of West Bank | January | 100 | 273 | 0.0 | 0 | 0.0 | 0 | 0.0 | 0 | 9.1 | 25 | 0.7 | 2 | | |
| | February | 100 | 483 | 0.0 | 0 | 0.0 | 0 | 0.0 | 0 | 20.1 | 97 | 0.4 | 2 | | |
| | March | 100 | 550 | 0.5 | 3 | 0.2 | 1 | 0.0 | 0 | 17.1 | 94 | 0.0 | 0 | | |
| Middle of West Bank | January | 100 | 1161 | 0.3 | 4 | 0.0 | 0 | 2.9 | 34 | 10.0 | 117 | 0.9 | 10 | | |
| | February | 100 | 4185 | 3.1 | 131 | 0.3 | 13 | 2.0 | 83 | 13.6 | 568 | 4.1 | 171 | | |
| | March | 100 | 2073 | 0.6 | 13 | 1.2 | 25 | 3.1 | 64 | 12.1 | 251 | 1.4 | 29 | | |
| Jerusalem | January | 100 | 14289 | 0.1 | 15 | 1.9 | 266 | 31.7 | 4526 | 41.3 | 5915 | 0.3 | 48 | | |
| | February | 100 | 12933 | 0.8 | 101 | 0.8 | 97 | 27.6 | 3574 | 39.2 | 5069 | 1.7 | 226 | | |
| | March | 100 | 7655 | 0.6 | 43 | 1.5 | 115 | 18.1 | 1389 | 51.5 | 3949 | 4.4 | 334 | | |
| South of West Bank | January | 100 | 7664 | 0.0 | 0 | 15.9 | 1219 | 34.9 | 2674 | 37.9 | 2897 | 0.3 | 26 | | |
| | February | 100 | 7602 | 0.1 | 10 | 16.3 | 1241 | 37.4 | 2843 | 30.2 | 2292 | 0.0 | 0 | | |
| | March | 100 | 10258 | 0.4 | 37 | 10.6 | 1088 | 42.0 | 4310 | 26.7 | 2746 | 0.8 | 82 | | |
| Gaza Strip | January | 100 | 181 | 0.0 | 0 | 12.7 | 23 | 38.7 | 70 | 6.0 | 11 | 1.7 | 3 | | |
| | February | 100 | 65 | 3.1 | 2 | 0.0 | 0 | 0.0 | 0 | 83.1 | 54 | 0.0 | 0 | | |
| | March | 100 | 8 | 0.0 | 0 | 0.0 | 0 | 0.0 | 0 | 100.0 | 8 | 0.0 | 0 | | |

2009

:6

Table 6: Number and Percentage of Guest Nights by Nationality and Region During the First Quarter, 2009

| Region | Month | Nationality | | | | | | | | | | No. of Operating Hotels | | |
|-----------------------|----------|----------------|--------|------|--------|--------|--------|----------------|--------|-----------|--------|----------------------------------|--|--|
| | | U.S.A & Canada | | Asia | | Israel | | Arab Countries | | Palestine | | | | |
| | | % | Number | % | Number | % | Number | % | Number | % | Number | | | |
| Palestinian Territory | | 12.6 | 21176 | 4.7 | 7845 | 2.2 | 3770 | 0.6 | 1036 | 7.0 | 11819 | 75 | | |
| All Regions | January | 16.3 | 10362 | 2.6 | 1682 | 1.1 | 727 | 0.5 | 316 | 3.7 | 2354 | 82 | | |
| | February | 11.5 | 6116 | 5.4 | 2870 | 3.7 | 1987 | 0.8 | 416 | 10.4 | 5491 | 82 | | |
| | March | 9.1 | 4698 | 6.4 | 3293 | 2.0 | 1056 | 0.6 | 304 | 7.7 | 3974 | 75 | | |
| North of West Bank | January | 9.2 | 67 | 0.3 | 2 | 0.4 | 3 | 6.9 | 50 | 67.8 | 493 | 7 | | |
| | February | 1.9 | 18 | 0.3 | 3 | 2.7 | 26 | 1.3 | 12 | 73.1 | 697 | 7 | | |
| | March | 6.1 | 62 | 4.7 | 48 | 7.4 | 76 | 3.2 | 33 | 55.7 | 569 | 7 | | |
| Middle of West Bank | January | 10.1 | 269 | 5.8 | 155 | 5.1 | 134 | 5.5 | 145 | 54.5 | 1446 | 17 | | |
| | February | 8.1 | 591 | 2.8 | 208 | 6.3 | 457 | 4.5 | 332 | 54.7 | 3996 | 19 | | |
| | March | 12.7 | 686 | 4.4 | 237 | 4.1 | 224 | 3.6 | 193 | 53.0 | 2869 | 17 | | |
| Jerusalem | January | 20.7 | 9043 | 1.8 | 795 | 1.2 | 542 | 0.1 | 37 | 0.0 | 0 | 29 | | |
| | February | 16.4 | 4278 | 4.8 | 1242 | 5.5 | 1443 | 0.3 | 72 | 0.0 | 10 | 28 | | |
| | March | 16.8 | 3279 | 3.4 | 663 | 2.6 | 516 | 0.0 | 0 | 0.0 | 0 | 24 | | |
| South of West Bank | January | 5.9 | 976 | 4.3 | 707 | 0.3 | 48 | 0.0 | 3 | 2.5 | 413 | 21 | | |
| | February | 6.6 | 1220 | 7.7 | 1417 | 0.3 | 61 | 0.0 | 0 | 4.3 | 788 | 22 | | |
| | March | 2.6 | 671 | 9.2 | 2345 | 0.9 | 240 | 0.3 | 78 | 2.1 | 536 | 19 | | |
| Gaza Strip | January | 3.2 | 7 | 10.4 | 23 | 0.0 | 0 | 36.5 | 81 | 0.9 | 2 | 8 | | |
| | February | 10.5 | 9 | 0.0 | 0 | 0.0 | 0 | 0.0 | 0 | 0.0 | 0 | 6 | | |
| | March | 0.0 | 0 | 0.0 | 0 | 0.0 | 0 | 0.0 | 0 | 0.0 | 0 | 8 | | |

2009

:() 6

Table 6 (Cont.): Number and Percentage of Guest Nights by Nationality and Region During the First Quarter, 2009

| Region | Month | Total | | Nationality | | | | | | | | | | الجنسية | الشهر | |
|-----------------------|----------|-------|--------|--------------------------|--------|--------|------------|-----------------------------|--------|----------------|--------|----------------------------|--------|---------|-------|--|
| | | | | & Australia NewZeland | | Africa | | Other European Countries | | European Union | | Central & South America | | | | |
| | | % | Number | % | Number | % | Num ber | % | Number | % | Number | % | Number | | | |
| Palestinian Territory | | 100 | 168167 | 0.3 | 579 | 3.0 | 5051 | 31.4 | 52615 | 36.7 | 61700 | 1.5 | 2576 | | | |
| All Regions | January | 100 | 63646 | 0.1 | 34 | 3.1 | 1968 | 32.3 | 20526 | 40.0 | 25474 | 0.3 | 203 | | | |
| | February | 100 | 52989 | 0.7 | 345 | 2.7 | 1425 | 28.3 | 15006 | 34.7 | 18401 | 1.8 | 932 | | | |
| | March | 100 | 51532 | 0.4 | 200 | 3.2 | 1658 | 33.2 | 17083 | 34.6 | 17825 | 2.8 | 1441 | | | |
| North of West Bank | January | 100 | 727 | 0.0 | 0 | 0.0 | 0 | 0.0 | 0 | 15.1 | 110 | 0.3 | 2 | | | |
| | February | 100 | 953 | 0.0 | 0 | 0.0 | 0 | 0.0 | 0 | 20.5 | 195 | 0.2 | 2 | | | |
| | March | 100 | 1021 | 1.3 | 12 | 0.1 | 1 | 0.0 | 0 | 21.5 | 220 | 0.0 | 0 | | | |
| Middle of West Bank | January | 100 | 2652 | 0.2 | 5 | 0.0 | 0 | 3.4 | 90 | 14.6 | 388 | 0.8 | 20 | | | |
| | February | 100 | 7305 | 2.0 | 141 | 0.2 | 14 | 1.6 | 116 | 15.5 | 1133 | 4.3 | 317 | | | |
| | March | 100 | 5410 | 0.7 | 41 | 0.8 | 41 | 4.1 | 220 | 16.0 | 864 | 0.6 | 35 | | | |
| Jerusalem | January | 100 | 43626 | 0.1 | 29 | 1.1 | 486 | 35.5 | 15470 | 39.2 | 17095 | 0.3 | 129 | | | |
| | February | 100 | 26137 | 0.6 | 182 | 0.7 | 170 | 28.1 | 7344 | 41.3 | 10783 | 2.3 | 613 | | | |
| | March | 100 | 19533 | 0.4 | 84 | 2.8 | 528 | 20.3 | 3969 | 48.2 | 9417 | 5.5 | 1077 | | | |
| South of West Bank | January | 100 | 16419 | 0.0 | 0 | 8.9 | 1459 | 29.9 | 4896 | 47.9 | 7868 | 0.3 | 49 | | | |
| | February | 100 | 18508 | 0.1 | 20 | 6.7 | 1241 | 40.7 | 7546 | 33.6 | 6215 | 0.0 | 0 | | | |
| | March | 100 | 25560 | 0.2 | 63 | 4.4 | 1088 | 50.4 | 12894 | 28.5 | 7316 | 1.4 | 329 | | | |
| Gaza Strip | January | 100 | 222 | 0.0 | 0 | 10.3 | 23 | 31.5 | 70 | 5.8 | 13 | 1.4 | 3 | | | |
| | February | 100 | 86 | 2.3 | 2 | 0.0 | 0 | 0.0 | 0 | 87.2 | 75 | 0.0 | 0 | | | |
| | March | 100 | 8 | 0.0 | 0 | 0.0 | 0 | 0.0 | 0 | 100.0 | 8 | 0.0 | 0 | | | |

2009

(/)

:7

Table 7: Average Length of Stay for the Guests in Hotels (Nights/Guest) by Region, Month and Nationality During the First Quarter, 2009

| Region | Month | Nationality | | | | | No. of Operating Hotels | | |
|------------------------------|-----------------|----------------|------------|------------|----------------|------------|-------------------------|--|--|
| | | U.S.A & Canada | Asia | Israel | Arab Countries | Palestine | | | |
| Palestinian Territory | | 2.7 | 2.3 | 1.6 | 1.7 | 2.0 | 75 | | |
| All Regions | January | 3.1 | 2.7 | 2.0 | 2.0 | 2.0 | 82 | | |
| | February | 2.1 | 2.3 | 1.5 | 1.5 | 1.9 | 82 | | |
| | March | 3.0 | 2.1 | 1.6 | 1.8 | 2.0 | 75 | | |
| North of West Bank | January | 6.7 | 2.0 | 1.0 | 7.1 | 2.2 | 7 | | |
| | February | 2.0 | 1.0 | 1.2 | 6.0 | 2.0 | 7 | | |
| | March | 3.4 | 0.0 | 1.1 | 3.0 | 1.7 | 7 | | |
| Middle of West Bank | January | 3.6 | 5.3 | 2.7 | 1.6 | 1.9 | 17 | | |
| | February | 1.6 | 0.0 | 1.4 | 1.3 | 1.8 | 19 | | |
| | March | 4.1 | 9.9 | 1.8 | 2.0 | 2.2 | 17 | | |
| Jerusalem | January | 3.1 | 2.7 | 1.9 | 2.5 | 0.0 | 29 | | |
| | February | 1.9 | 1.9 | 1.5 | 3.3 | 0.0 | 28 | | |
| | March | 2.8 | 1.8 | 1.8 | 0.0 | 0.0 | 24 | | |
| South of West Bank | January | 3.0 | 2.6 | 1.6 | 1.5 | 1.9 | 21 | | |
| | February | 3.6 | 2.6 | 1.3 | 0.0 | 2.7 | 22 | | |
| | March | 3.0 | 2.0 | 1.2 | 1.3 | 1.4 | 19 | | |
| Gaza Strip | January | 1.0 | 1.4 | 0.0 | 1.7 | 1.0 | 8 | | |
| | February | 1.0 | 0.0 | 0.0 | 0.0 | 0.0 | 6 | | |
| | March | 0.0 | 0.0 | 0.0 | 0.0 | 0.0 | 8 | | |

2009

(/)

:() 7

Table 7 (Cont.): Average Length of Stay for the Guests in Hotels (Nights/Guest) by Region, Month and Nationality During the First Quarter, 2009

| Region | Month | Total | Nationality | | | | | | |
|------------------------------|-----------------|------------|------------------------|------------|-----------------------|----------------|-------------------------|--|--|
| | | | Australia & New Zeland | Africa | Other European Count. | European Union | Central & South America | | |
| Palestinian Territory | | 2.4 | 1.6 | 1.2 | 2.7 | 2.6 | 2.8 | | |
| All Regions | January | 2.7 | 1.8 | 1.3 | 2.8 | 2.8 | 2.3 | | |
| | February | 2.1 | 1.4 | 1.1 | 2.3 | 2.3 | 2.3 | | |
| | March | 2.5 | 2.1 | 1.3 | 3.0 | 2.5 | 3.2 | | |
| North of West Bank | January | 2.7 | 0.0 | 0.0 | 0.0 | 4.4 | 0.0 | | |
| | February | 2.0 | 0.0 | 0.0 | 0.0 | 2.0 | 0.0 | | |
| | March | 1.9 | 0.0 | 0.0 | 0.0 | 2.3 | 0.0 | | |
| Middle of West Bank | January | 2.3 | 1.3 | 0.0 | 2.6 | 3.3 | 2.0 | | |
| | February | 1.7 | 1.1 | 0.0 | 1.4 | 2.0 | 1.9 | | |
| | March | 2.6 | 3.2 | 0.0 | 3.4 | 3.4 | 1.2 | | |
| Jerusalem | January | 3.1 | 1.9 | 1.8 | 0.0 | 2.9 | 0.0 | | |
| | February | 2.0 | 1.8 | 1.8 | 2.1 | 2.1 | 2.7 | | |
| | March | 2.6 | 0.0 | 4.6 | 2.9 | 2.4 | 3.2 | | |
| South of West Bank | January | 2.1 | 0.0 | 0.0 | 1.8 | 2.7 | 1.9 | | |
| | February | 2.4 | 0.0 | 0.0 | 0.0 | 2.7 | 0.0 | | |
| | March | 2.5 | 0.0 | 0.0 | 3.0 | 2.7 | 4.0 | | |
| Gaza Strip | January | 1.2 | 0.0 | 0.0 | 0.0 | 1.2 | 0.0 | | |
| | February | 1.3 | 1.0 | 0.0 | 0.0 | 1.4 | 0.0 | | |
| | March | 1.0 | 0.0 | 0.0 | 0.0 | 1.0 | 0.0 | | |



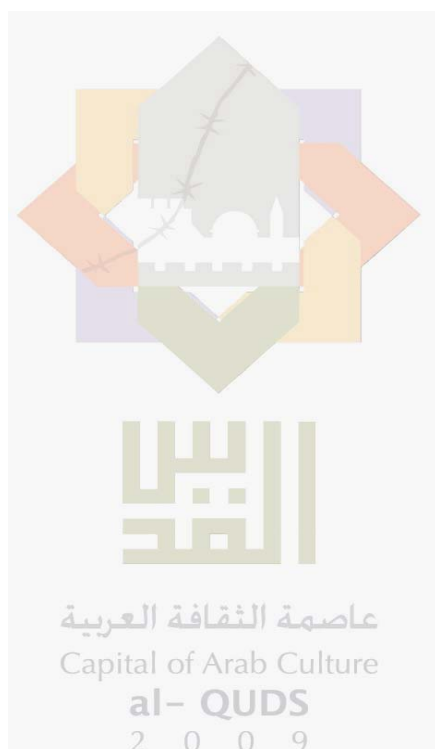
**Palestinian National Authority
Palestinian Central Bureau of Statistics**

**Hotel Activities in the Palestinian Territory
(First Quarter 2009)
Executive Summary**

**Volume 15, Issue No. (1)
May, 2009**

"Cover price 2 US\$"

PAGE NUMBERS OF ENGLISH TEXT ARE PRINTED IN SQUARE BRACKETS.
TABLES ARE PRINTED IN THE ARABIC ORDER (FROM RIGHT TO LEFT)



**This document is prepared in
accordance with the standard
procedures stated in the Code
of Practice for Palestine
Official Statistics 2006**

© May, 2009
All rights reserved.

Suggested Citation:

Palestinian Central Bureau of Statistics, 2009. *Hotel Activities in the Palestinian Territory, (First Quarter, 2009) Executive Summary.* Ramallah - Palestine.

All correspondence should be directed to:

**Palestinian Central Bureau of Statistics
P.O.Box 1647, Ramallah, Palestine.**

Tel: (972/970) 2 242 6340

Fax: (972/970) 2 242 6343

E-Mail :diwan@pcbs.gov.ps

Web-Site: <http://www.pcbs.gov.ps>

Acknowledgments

The Palestinian Central Bureau of Statistics (PCBS) expresses to gratitude to all Palestinian hotels owners and managers who responded to the survey instrument for their understanding during the fieldwork, which was truly remarkable, and to all of those who worked on this survey for their contribution and commitment in implementing the survey and providing the necessary information and data.

The funding for this report was provided by the Palestinian National Authority (PNA) and the Core Funding Group (CFG) for 2009. CFG members include: the Representative Office of Norway to the PNA; the Representative Office of Netherlands to PNA; and the Swiss Agency for Development and Cooperation (SDC).

Data collection, processing, and printing of this document have been made possible through the financial assistance of the European Union. The contents of this document are the sole responsibility of the PCBS.

On this occasion, PCBS extends special thanks to the members of the CFG and the EU for their support.

Team Work

- **Report Preparation**
Rania Hassiba
- **Maps Design**
Nibal Ismaeel
- **Graphic Design**
Ahmad Sawalmeh
- **Dissemination Standard**
Hanan Janajreh
- **Preliminary Review**
Fathi Farasin
Mahmoud Abdalrahman
- **Final Review and Overall Supervision**
Mahmoud Jaradat
Ola Awad
Acting President

Preface

The Palestinian tourism sector has the potential to be a main contributor to the GDP in Palestine.

PCBS began publishing reports about hotel activities from the first quarter of 1996. PCBS is pleased to present the first issue of the fourteenth volume on “Hotel Activities in the Palestinian Territory” which covers statistics on the hotel industry for the first quarter of 2009.

PCBS has implemented several surveys to cover the supply and demand sides of tourism, including the Hotel Activity survey in the Palestinian Territory, a continuous and permanent survey since 1996, and a survey of Tourism Activities 2002 and 2007. In addition the Domestic Tourism survey for the years 1998, 2005 and 2006, the survey of Outbound Tourism in 2004, and a survey of Inbound Tourism 2005 were implemented to cover an important aspect of tourist demand and an additional step for the further implementation of surveys related to tourism statistics, to build the necessary database to establish the tourism satellite accounts (TSA) in the Palestinian Territory.

This report addresses the main indicators of the hotel industry. These indicators include the number of operating hotels, number of rooms and beds, public facilities in the surveyed hotels, number of employed persons in hotels, number of guest nights in the reference period, number of guests by nationality and rates of bed and room occupancy.

We hope that the Hotel Activities survey in the Palestinian Territory comprises a step towards supporting the tourism sector which contribute in enhancing the national economy.

May, 2009

Ola Awad
Acting President of PCBS

Table of Contents

| Subject | Page |
|--|-------------|
| List of Tables and Figures | |
| Executive Summary | |
| Chapter One: Introduction | [15] |
| Chapter Two: Concepts and Definitions | [17] |
| Chapter Three: Main Findings | [19] |
| 3.1 Hotels Capacity During the First Quarter 2009 | [19] |
| 3.2 Room Occupancy During the First Quarter 2009 | [19] |
| 3.3 Hotel Workers During the First Quarter 2009 | [19] |
| 3.4 Guests and Nights' Occupancy During the First Quarter 2009 | [19] |
| Tables | 25 |

List of Tables and Figures

| Table | | Page |
|------------------|--|-------------|
| Table 1: | Main Indicators for Hotel Activities by Month and Region During the First Quarter, 2009 | 27 |
| Table 2: | Number of Hotels and Rooms by Facilities and Region as of March, 2009 | 28 |
| Table 3: | Number of Hotels by Availability of Public Services and Region as of March, 2009 | 28 |
| Table 4: | Average Number of Workers in Hotels by Type of Work, Sex and Region During the First Quarter, 2009 | 29 |
| Table 5: | Number and Percentage of Guests by Nationality and Region During the First Quarter, 2009 | 30 |
| Table 6: | Number and Percentage of Guest Nights by Nationality and Region During the First Quarter, 2009 | 32 |
| Table 7: | Average Length of Stay for the Guests in Hotels (Nights/Guest) by Region, Month and Nationality During the First Quarter, 2009 | 34 |
| Figures | | |
| Figure 1: | Percentage Distribution of Guests by Nationality During the First Quarter, 2009. | [19] |

Executive Summary

The main findings of the hotels survey during the first quarter of 2009 are as follows:

- There are 75 operating hotels in March 2009, offering 3,694 rooms with total available beds of 7,612.
- The average occupancy of rooms was 951.8; it declined by 30.6% compared with the same quarter of the year 2008, while it declined by 23.3% compared with the previous quarter.
- The average number of workers in the hotels 1,345 of which 201 were females.
- During the first quarter 2009, the total number of guests to the Palestinian Territory hotels reached 69,380; they declined by 20.0% compared with the same quarter of the year 2008.
- Most of the guests were in Jerusalem, representing 50.2% of the total guests, whereas the 10.7% of the guests were in Middle of the West Bank, 36.8% were in South of the West Bank, and 1.9% were in North of the West Bank, while the percentage of guests in Gaza Strip hotels was 0.4%.
- The total number of nights was 168,167. It declined by 45.7% during the first quarter 2009 compared with the previous quarter, while it declined by 19.1% compared with the corresponding quarter in the year 2008.
- The average length of stay in the Palestinian hotels was 2.4 nights per guest during the first quarter 2009.

Chapter One

Introduction

Tourism is considered a cornerstone of the Palestinian economy because there are many attractive touristic resorts for people of different interests. Therefore, PCBS commenced to collect statistical data on tourism and monitor hotel activities through a continuous and comprehensive survey since 1996, this survey is carried out on a monthly basis. Such activity following the World Tourism Organization and European Union recommendations. It aimed to produce a comprehensive database and time series of basic indicators on the hotel industry hoping to enable the development and promotion of the tourism industry in Palestine.

A quarterly report is regularly produced and a collective comprehensive report is produced annually. This publication presents data on hotels for the first quarter 2009; which its results indicated that the rate of decline is the lowest compared to the previous seven years.

Chapter Two

Concepts and Definitions

This section presents the main concepts and definitions used to derive the main indicators of tourism statistics. These concepts and definitions are based on international recommendations in the field of tourism statistics, and are applied to the rest of the cross cutting subjects in the Palestinian Central Bureau of Statistics. The main concepts and definitions mentioned in this report were as follows:

Hotel:

It is defined as an accommodation establishment providing overnight lodging for the visitors in a room or unit. It should hold a number of persons exceeding that of an average single family. The establishment must be under one management, and provides different facilities and services to visitors.

Operating Hotels:

It is defined as the hotels that included in the sample frame and results, excluding the non operating hotels that are carrying out repairs maintenance, and the hotels which didn't respond to the survey.

Number of Rooms:

It refers to the furnished rooms for the use of guests. Such rooms might be single, double, triple, or quadruple. Rooms involving more than four beds were classified under (others) in the questionnaire. As for the suite, it is usually comprised of one bedroom or more, a living room and private toilet facilities.

Available Beds and Rooms:

It refers to beds and rooms which are ready for use during the reference period. Rooms closed for maintenance or repairs are excluded.

Guests:

It refers to visitors staying in the hotels and using their facilities. Records of new guests are based on the number of visits regardless whether it's the same person or different.

Number of Guest Nights (Bed Occupancy):

Number of beds booked for hotel guests. Such beds are considered as occupied whether they were actually used or not. It is measured by guest night unit.

Room Occupancy:

Number of booked and paid rooms. Such rooms are considered occupied whether they were actually used or not.

Average (rooms, beds) Occupancy:

It is defined as the total number of occupied (rooms, beds) divided by the number of days.

Percentage of (rooms, beds) Occupancy:

It is defined as the average of (rooms, beds) occupancy divided by available (rooms, beds) multiplied by one hundred.

Average Length of Stay:

Represents the total of guest nights by nationality divided by number of guests of the same nationality.

North of West Bank Region:

Jenin, Tulkarm, Nablus, Qalqiliya, Salfit and Tubas governorates.

Middle of West Bank Region:

Ramallah and Al-Bireh, Jericho and Al-Aghwar governorates.

Jerusalem Region:

Jerusalem governorate.

South of West Bank Region:

Bethlehem and Hebron governorates.

Gaza Strip:

North Gaza, Gaza, Deir Al-Balah, Khan Yunis and Rafah governorates.

Chapter Three

Main Findings

The total number of hotels in the Palestinian Territory was 117 hotels, including those temporarily closed. There were 75 operating hotels in March 2009, offering 3,694 rooms with total available beds of 7,612.

3.1 Hotels Capacity During the First Quarter 2009

The operating hotels within the Palestinian Territory in March 2009 are distributed as follows:

- North of West Bank: 7 hotels including 134 rooms comprising 292 beds.
- Middle of West Bank: 17 hotels including 580 rooms comprising 1,169 beds.
- Jerusalem Region: 24 hotels including 1,109 rooms comprising 2,355 beds.
- South of West Bank: 19 hotels including 1,546 rooms comprising 3,226 beds.
- Gaza Strip: 8 hotels including 325 rooms comprising 570 beds.

3.2 Room Occupancy During the First Quarter 2009

The average occupancy of rooms in the Palestinian hotels was 951.8 representing 32.8% from the available rooms.

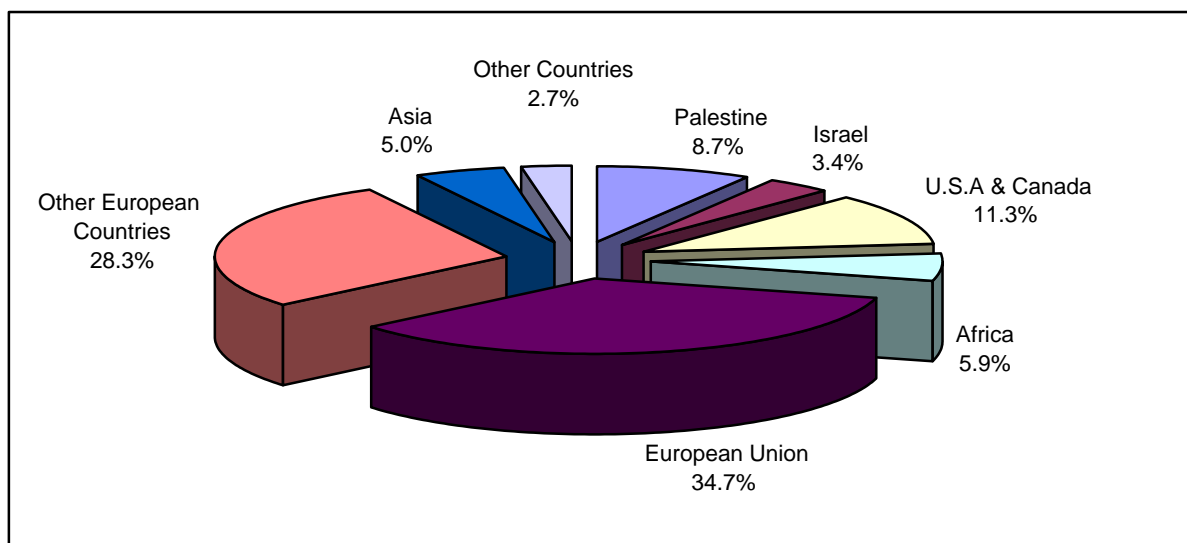
3.3 Hotel Workers During the First Quarter 2009

The average number of workers in the hotels was 1,345 of which 1,144 were males and 201 were females. The number of workers in hotel administration was 247, of which 191 were males and 56 were females. There were 1,098 workers in hotels services, of which 953 were males and 145 were females.

3.4 Guests and Nights Occupancy During the First Quarter 2009

The total number of guests in the Palestinian hotels was 69,380 persons, of which 8.7% were Palestinian guests, and 34.7% were from the European Union countries. The number of guests decreased by 20.0%, compared with the same quarter of the year 2008.

Figure (1): Percentage Distribution of Guests by Nationality During the First Quarter, 2009



The total number of guest nights in Palestinian hotels during the first quarter 2009 was 168,167 of which; 7.0% of these nights were occupied by Palestinian guests, 36.7% by guests from European Union countries, and 12.6% by guests from the United States and Canada.

The guests nights distributed according to the region are as follows:

Guests spent 53.1% of total nights in Jerusalem hotels, and 9.1%, 36.0%, 1.6% in Middle, South, and North of the West Bank, respectively, and 0.2% of nights in Gaza Strip hotels.

The below table presents the main results of the first quarter of 2009, and explains the changes that occurred in the main indicators for Palestinian hotels activities, compared with the previous quarter, and with the results of the first quarter of 2008.

Percentage Change in the Variables During the First Quarter 2009, Compared with the Previous and First Quarter 2008

| The Indicator | Value During the 1st Quarter 2009 | Percentage change (%) comparing with | |
|----------------------------|-----------------------------------|--------------------------------------|------------------------------|
| | | 1 st Quarter 2008 | 4 th Quarter 2008 |
| Number of operating hotels | 75 | -8.5 | -11.8 |
| Average number of workers | 1,345 | 11.9 | -4.7 |
| Number of guests | 69,380 | -20.0 | -41.0 |
| Number of guest nights | 168,167 | -19.1 | -45.7 |
| Average occupancy of rooms | 951.8 | -30.6 | -23.3 |
| Average occupancy of beds | 1,827.9 | -18.2 | -44.5 |
| Rooms occupancy % | 23.8 | -29.8 | -20.1 |
| Beds occupancy % | 21.7 | -14.0 | -41.8 |